

TARGET GROUPS



LOCAL COMMUNITIES

Upstream, midstream, and downstream community of river



MILLENNIALS

Key agents for change



GOVERNMENT STAKEHOLDERS

Smart partnership

ACTIVITIES



Consultation with key stakeholders



Thimbles installation



Water conservation training



River clean up and quality improvement



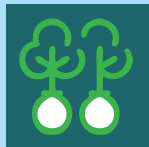
River walk



River monitoring



Hydrology study



Tree planting

GOVERNMENT STAKEHOLDERS

- Department of Irrigation and Drainage (DID)
- Selangor Water Management Authority (LUAS)
- Petaling Jaya City Council (MBPJ)
- Selangor State Forestry Department (SSFD)
- Department of National Unity and Integration (JPNIN)
- Local Agenda 21 (LA21) MBPJ & DBKL
- Department of Town and Country Planning (JPBD)
- Department of Environment (DOE)
- Department of Orang Asli Development (JAKOA)

RIVER CARE EDUCATION CENTRES



SUNGAI PENCHALA OPEN CLASSROOM

Bukit Kiara, the source of Penchala River

- Upstream of Penchala River at Class I, pristine condition, where you can observe aquatic living things that indicates clean river.
- Four learning stations: Source of the River, Voice of the Stream, Meandering and Biomonitoring.



SUNGAI PENCHALA RIVER INFORMATION CENTRE

Desa Mentari, PJ

- Act as training centre with camping facilities particularly for river education.



SUNGEI WAY COMMUNITY INFORMATION CENTRE

- Managed by Sahabat Komuniti Sungei Way.
- Showcase centre for community initiatives such as wetland nursery, community garden, composting and rainwater harvesting.



MOBILE RIVER CARE UNIT (MRCU)

- A mobile unit to reach the target groups directly, who is outside the basin.
- It has in-built exhibition materials on river education.

Contact us to get yourself trained on environmental education:

GLOBAL ENVIRONMENT CENTRE

A: 2nd Floor, Wisma Hing,
78, Jalan SS2/72, 47300 Petaling Jaya,
Selangor Darul Ehsan, Malaysia

T: +60 3 7957 2007

F: +60 3 7957 7003

E: sathis@gec.org.my; kalithasan@gec.org.my

WWW.GEC.ORG.MY

WWW.WATERPROJECT.NET.MY

WWW.FB.COM/FRIENDSOFSUNGAIPENCHALA

WWW.FB.COM/SPARKFOUNDATIONMY

WATER PROJECT

WATER STEWARDSHIP AGENDA 2018-2020

INITIATED BY:

SPARK
FOUNDATION



IN PARTNERSHIP WITH:



INTRODUCTION

W.A.T.E.R Project was initiated in 2007 by SPARK Foundation, in partnership with the Global Environment Centre (GEC). Water Stewardship Agenda is third phase of W.A.T.E.R. Project that focuses on Sungai Penchala, a tributary of Sungai Sungai Way, Sungai Klang and Sungai Selangor.

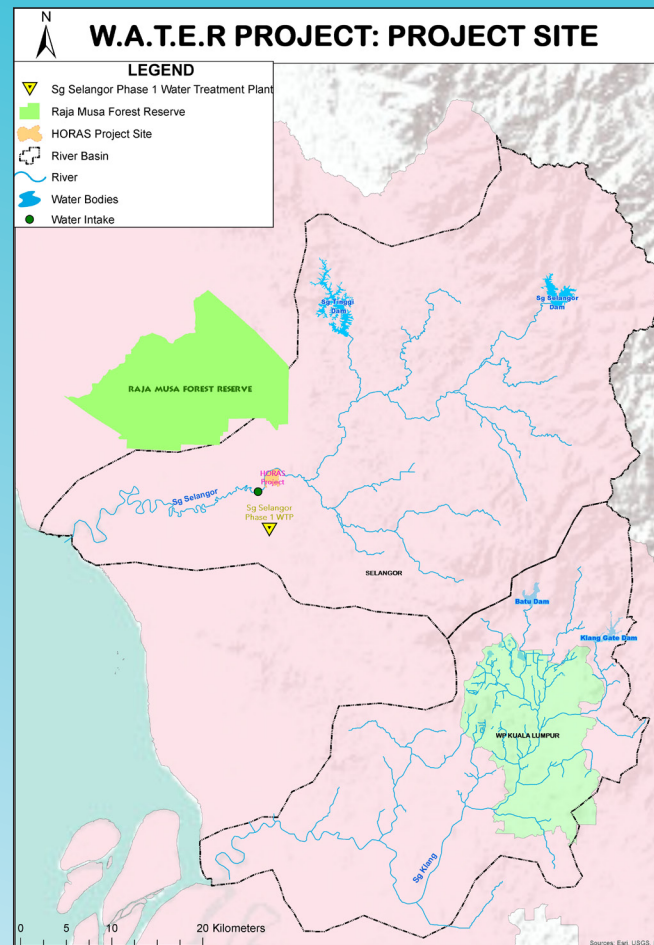
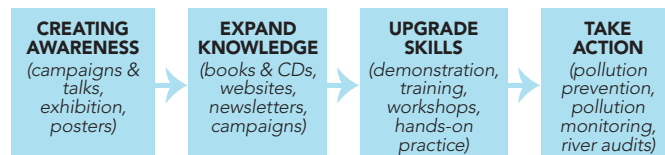


OBJECTIVES

- To continue Sungai Penchala River Education Programme (Including Sungai Way)
- To empower targeted group on water stewardship
- To encourage participatory approaches in river basin projects by relevant government agencies
- Reduce stress on our water resources

CIVIC SCIENCE APPROACH

Emphasized in creating awareness, providing knowledge, and empower community stakeholders with water conservation related skills and actions.

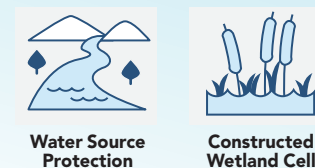


INITIATIVES

WATER FOR WATER



WATER FOR QUALITY WATER



SELANGOR RIVER BASIN...

Sungai Selangor
has 7 major tributaries.

Raja Musa Forest Reserve
(35,656 hectares), part of **North Selangor Peat Swamp Forest** (81,304 hectares) in northern Selangor is an important water source for Selangor River Basin.

comprises
28%
of Selangor.

covering 2,200km² area, making it the
3RD biggest river basin
in Selangor.

supplying
60%
of Kuala Lumpur and Selangor.

KLANG RIVER BASIN...

Penchala river is 14 km (80% channelised) in length, flowing from Bukit Kiara hill in Kuala Lumpur and with ±290.3 km² catchment area.

Sungai Way is 2 km in length and flows into Penchala river before the river meets Klang River.

covering 1,278km² area, making it the
4TH biggest river basin
in Selangor.

Klang river stretched
120KM
with 13 major tributaries.